

RESOLUTION OF THE  
WHITE MOUNTAIN APACHE TRIBE OF THE  
FORT APACHE INDIAN RESERVATION

WHEREAS, the Indian Health Service has chosen the proposed locations for four new water storage tanks and two new wells at various communities on the Reservation, and

WHEREAS, the Indian Health Service requests the approval by the White Mountain Apache Tribe, through the Tribal Council, of the proposed locations of the water storage tanks and wells, and

WHEREAS, the White Mountain Apache Tribal Council has reviewed the proposed locations and approves of the Indian Health Service's chosen locations for the four water storage tanks and two wells, a copy of which is attached hereto.

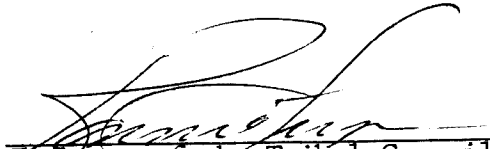
BE IT RESOLVED by the Tribal Council of the White Mountain Apache Tribe that the Chairman of the Tribe is hereby authorized to approve the chosen locations of the proposed sanitation facilities as designated by the Indian Health Service.

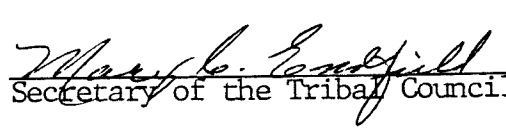
The foregoing resolution was on August 6, 1980 duly adopted by a vote of 8 for and 0 against by the Tribal Council of the White Mountain Apache Tribe, pursuant to authority vested in it by Article V, Section 1 (i) of the Amended Constitution and By-Laws of the Tribe, ratified by the Tribe June 27, 1958 and approved by the Secretary of the Interior on May 29, 1958, pursuant to Section 16 of the Act of June 18, 1934 (48 Stat. 984).

RECEIVED

AUG 13 1980

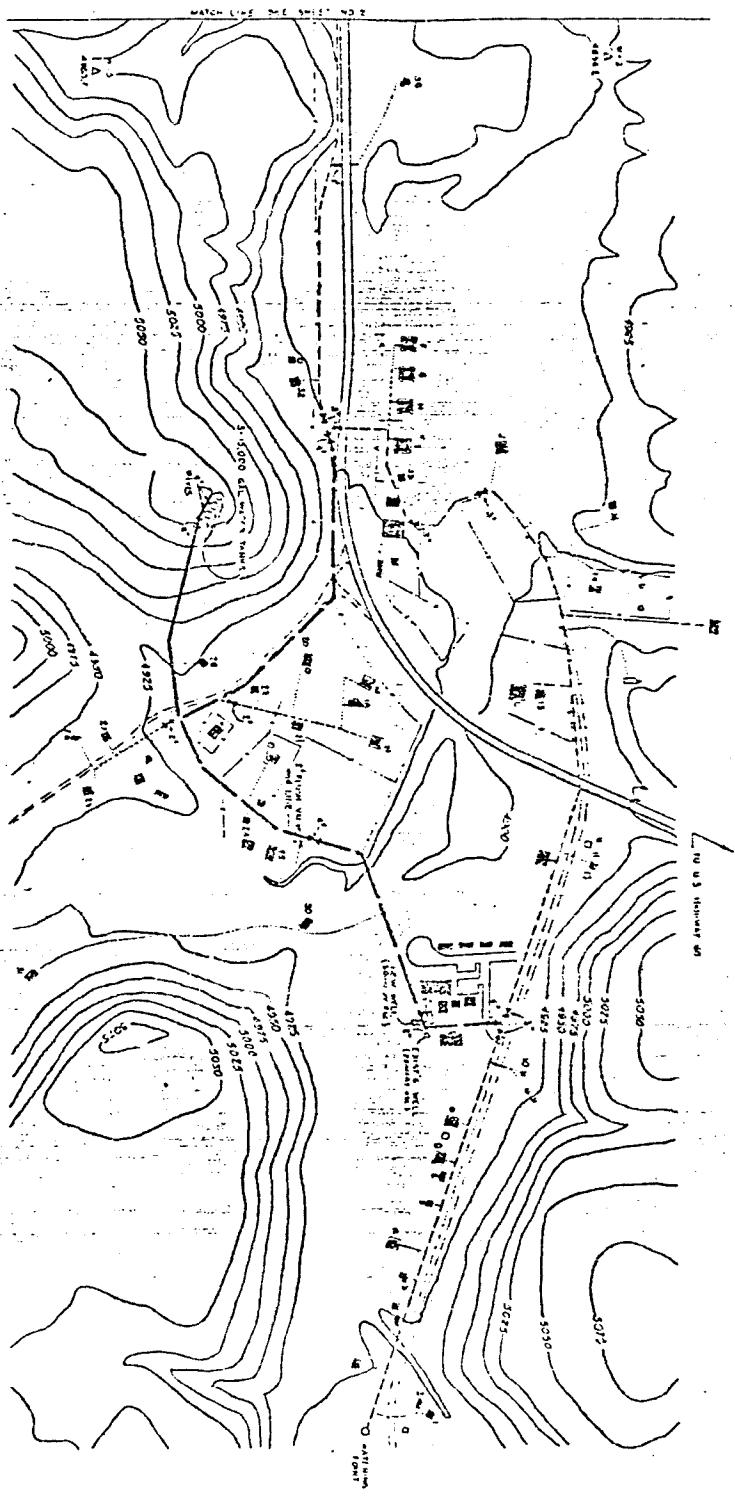
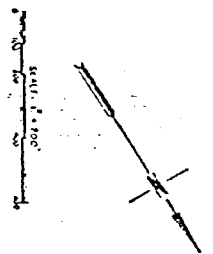
FORT APACHE INDIAN  
AGENCY  
WHITERIVER, ARIZ.

  
Chairman of the Tribal Council

  
Secretary of the Tribal Council

**LEGEND**

1. Contour lines  
 2. Spot heights  
 3. Elevation contours  
 4. Spot heights  
 5. Contour lines  
 6. Spot heights  
 7. Contour lines  
 8. Spot heights  
 9. Contour lines  
 10. Spot heights  
 11. Contour lines  
 12. Spot heights  
 13. Contour lines  
 14. Spot heights  
 15. Contour lines  
 16. Spot heights  
 17. Contour lines  
 18. Spot heights  
 19. Contour lines  
 20. Spot heights  
 21. Contour lines  
 22. Spot heights  
 23. Contour lines  
 24. Spot heights  
 25. Contour lines  
 26. Spot heights  
 27. Contour lines  
 28. Spot heights  
 29. Contour lines  
 30. Spot heights  
 31. Contour lines  
 32. Spot heights  
 33. Contour lines  
 34. Spot heights  
 35. Contour lines  
 36. Spot heights  
 37. Contour lines  
 38. Spot heights  
 39. Contour lines  
 40. Spot heights  
 41. Contour lines  
 42. Spot heights  
 43. Contour lines  
 44. Spot heights  
 45. Contour lines  
 46. Spot heights  
 47. Contour lines  
 48. Spot heights  
 49. Contour lines  
 50. Spot heights  
 51. Contour lines  
 52. Spot heights  
 53. Contour lines  
 54. Spot heights  
 55. Contour lines  
 56. Spot heights  
 57. Contour lines  
 58. Spot heights  
 59. Contour lines  
 60. Spot heights  
 61. Contour lines  
 62. Spot heights  
 63. Contour lines  
 64. Spot heights  
 65. Contour lines  
 66. Spot heights  
 67. Contour lines  
 68. Spot heights  
 69. Contour lines  
 70. Spot heights  
 71. Contour lines  
 72. Spot heights  
 73. Contour lines  
 74. Spot heights  
 75. Contour lines  
 76. Spot heights  
 77. Contour lines  
 78. Spot heights  
 79. Contour lines  
 80. Spot heights  
 81. Contour lines  
 82. Spot heights  
 83. Contour lines  
 84. Spot heights  
 85. Contour lines  
 86. Spot heights  
 87. Contour lines  
 88. Spot heights  
 89. Contour lines  
 90. Spot heights  
 91. Contour lines  
 92. Spot heights  
 93. Contour lines  
 94. Spot heights  
 95. Contour lines  
 96. Spot heights  
 97. Contour lines  
 98. Spot heights  
 99. Contour lines  
 100. Spot heights

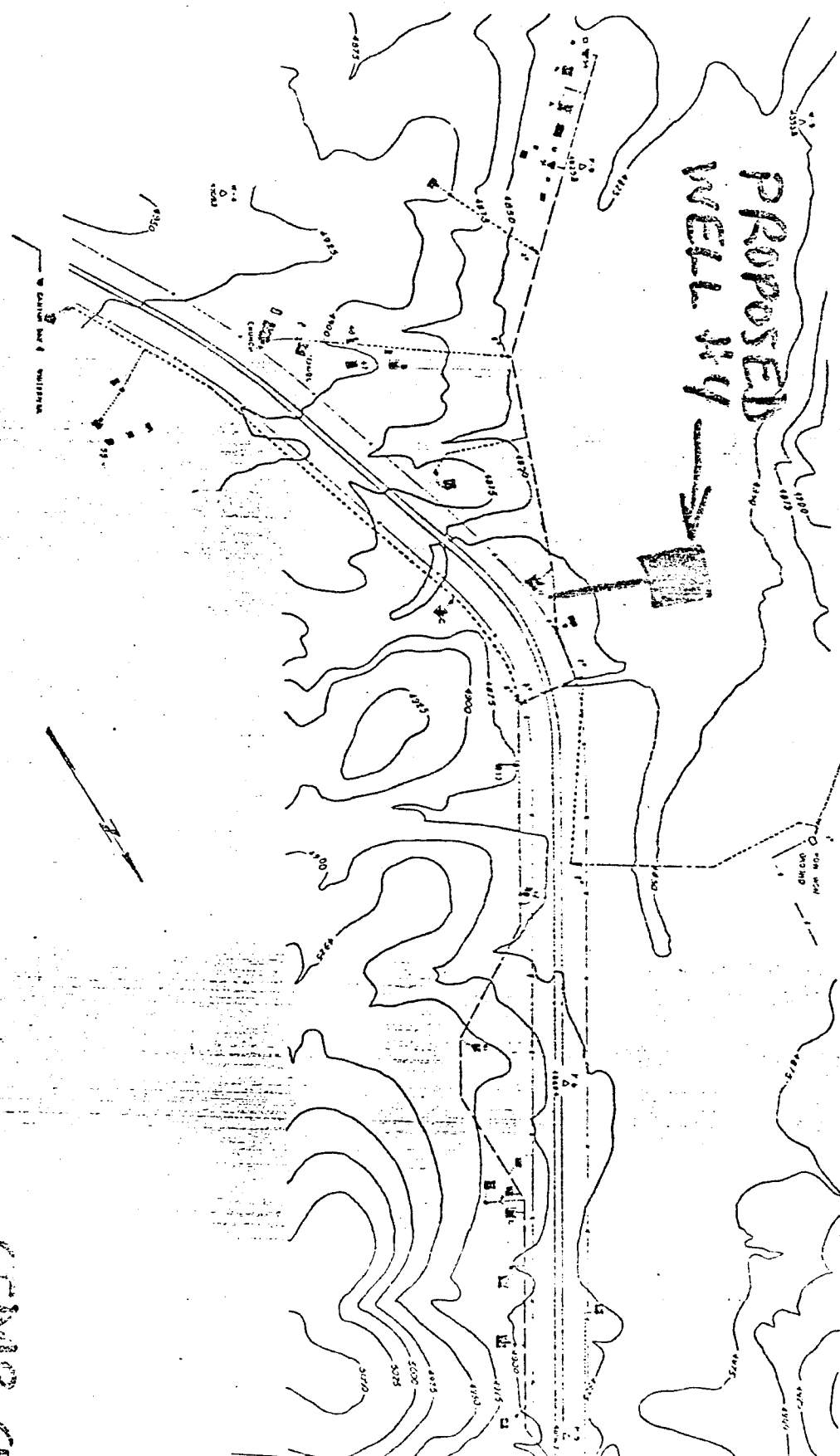


CONTOUR INTERVAL: 25'

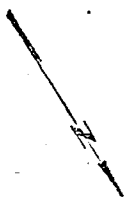
*Color Creek*

FEDERAL BUREAU OF INVESTIGATION DEPARTMENT OF JUSTICE	
DIVISION OF IDENTIFICATION	
IDENTIFICATION DIVISION	
DATE: 11/17/77	TIME: 10:00 AM
BY: [Signature]	CHECKED BY:
AS ABOVE	PAGE NO. 1 of 2
CC-1-77	FORM NO. 104-101

**PROPOSED  
WELL #14**



SCALE 1" = 200'



CONTOUR INTERVAL - 25'

DESIGNED BY: E. J. F. ...  
 DATE: 7/23/58  
 SHEET NO. 112

<p><b>CEMEX</b></p> <p>DEPARTMENT OF WATER, SEWERAGE AND STORM          WATER SERVICES AND SPECIAL WATER ADMINISTRATION</p>		<p>SHEET NO. 2 OF 2</p>
<p>PROJECT: 1/2" DUCT WATER INFILTRATION SYSTEM          PROJECT NO. 25-113</p>		<p>TOTAL SHEETS</p>
<p>DESIGNED BY: E. J. F.</p>	<p>CHECKED BY:</p>	<p>DATE: 7/23/58</p>
<p>APPROVED BY:</p>	<p>DATE:</p>	<p>PROJECT NO. 25-113</p>
<p>DATE: 7/23/58</p>	<p>DATE:</p>	<p>PROJECT NO. 25-113</p>
<p>DATE: 7/23/58</p>	<p>DATE:</p>	<p>PROJECT NO. 25-113</p>

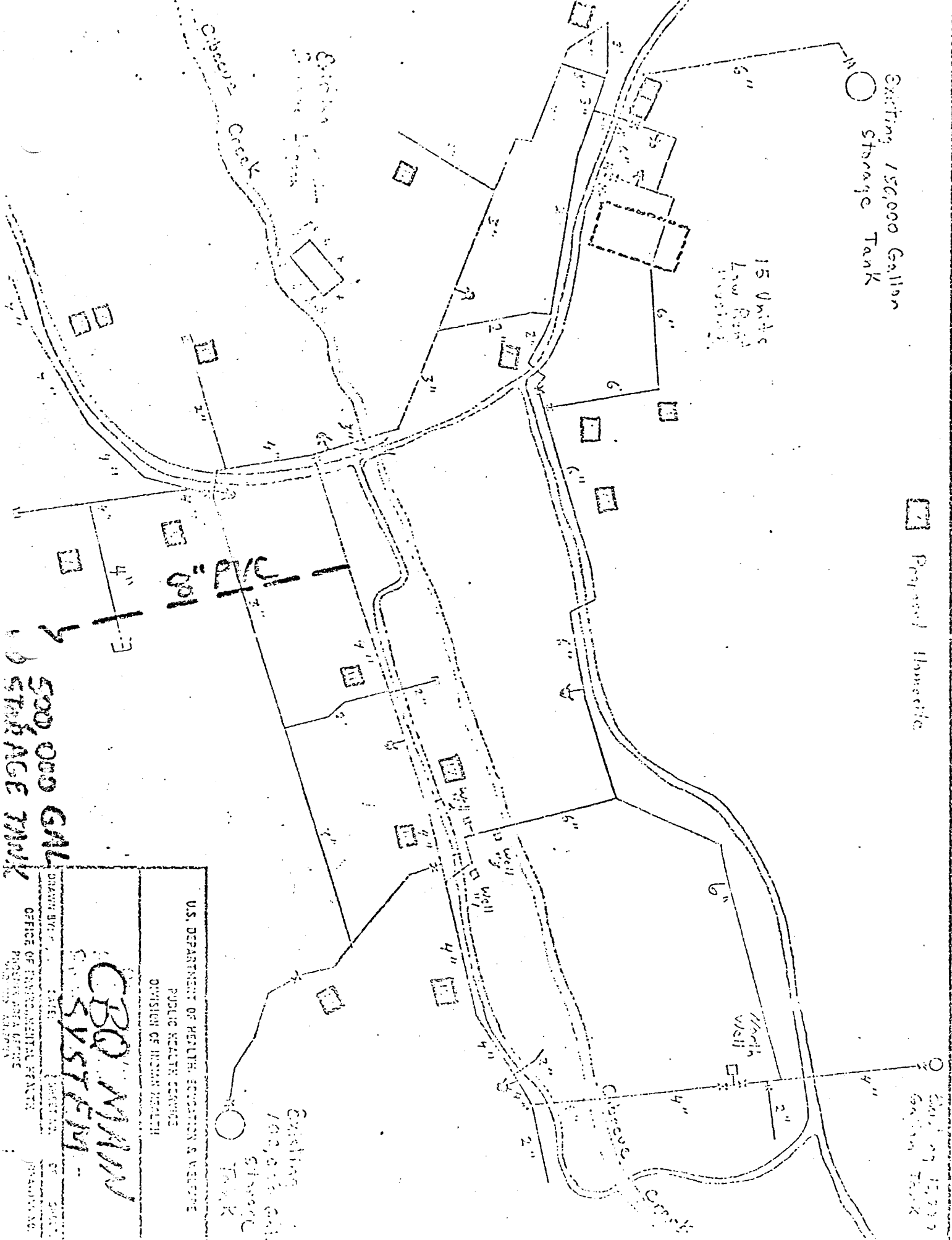
MATCH LINE SEE SHEET NO. 111

Existing 150,000 Gallon Storage Tank

15 Units Low Rise Housing

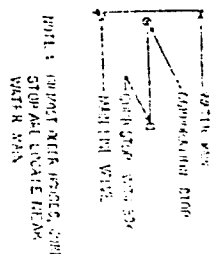
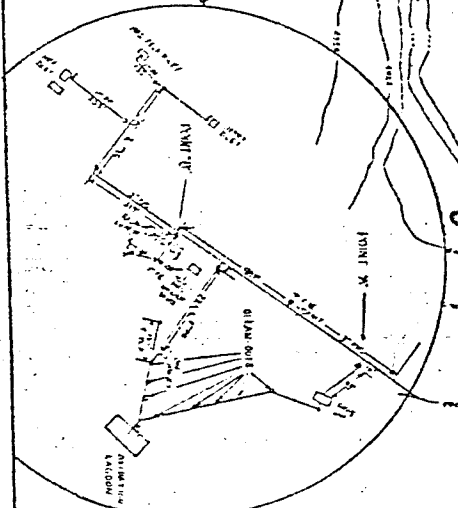
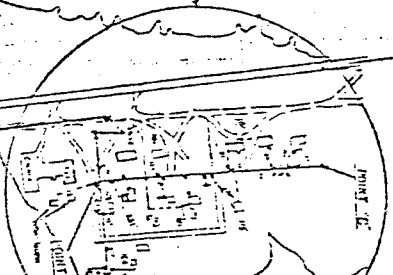
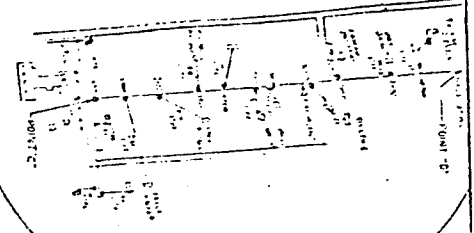
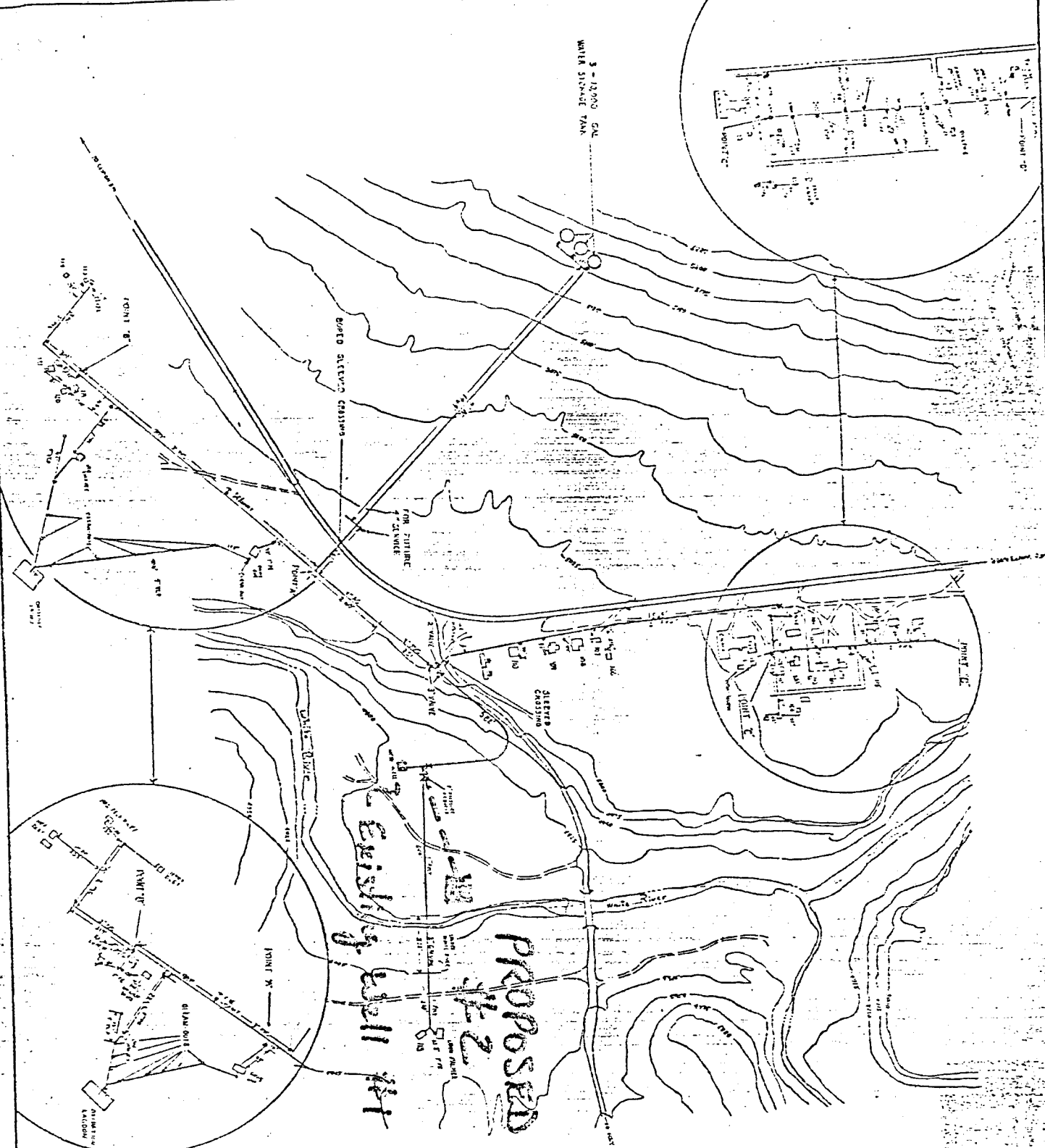
Proposed Housing

Existing 150,000 Gallon Tank



500,000 GAL STORAGE TANK

U.S. DEPARTMENT OF HEALTH, EDUCATION & WELFARE PUBLIC HEALTH SERVICE DIVISION OF HUMAN HEALTH	
<h1>CROSS SECTION SYSTEM</h1>	
DRAWN BY: [ ] DATE: [ ] CHECKED BY: [ ] PROJECT AREA OFFICE: [ ] PROJECT NO.: [ ]	SCALE: [ ] SHEET NO.: [ ] TOTAL SHEETS: [ ]



**PT. APACHE JCF**

DEPARTMENT OF WATER, GAS AND ELECTRICITY		DATE	1/27/72
PUBLIC UTILITIES DIVISION		PROJECT NO.	1-72
METER INSTALLATION RECORD SHEET		DATE OF METER INSTALLATION	1/27/72
WELL NO.	1	WELL TYPE	WELL
WELL LOCATION	SECTION 17, T4N, R10E	WELL DEPTH	100 FT.
WELL OWNER	PT. APACHE JCF	WELL STATUS	ACTIVE
WELL DATE	1/27/72	WELL TYPE	WELL
WELL DEPTH	100 FT.	WELL STATUS	ACTIVE
WELL OWNER	PT. APACHE JCF	WELL TYPE	WELL
WELL DATE	1/27/72	WELL STATUS	ACTIVE