

**RESOLUTION OF THE  
WHITE MOUNTAIN APACHE TRIBE OF THE  
FORT APACHE INDIAN RESERVATION**

**WHEREAS,** the Tribal Roads Committee concurs that the community of Cibecue is in need of a bridge on the upper crossing known as Route G-20 on the attached map. This crossing is a vital link between the east and west portions of the community, also this is the main bus route used in picking up school children; and

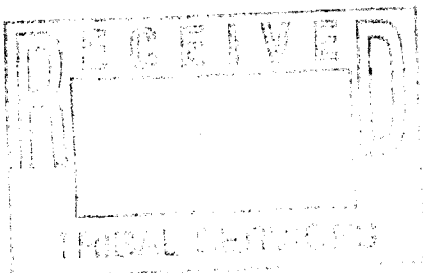
**WHEREAS,** the school year at Cibecue is based on a year round 12 month schedule and the current crossing shown as Route G-20 is utilized each day that school children are transported to and from school; and

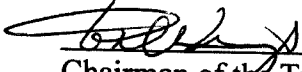
**WHEREAS,** the Cibecue school buses must be checked regularly for brake wear, break warping or other mechanical deterioration caused by water damage and to maintain safety at the highest levels possible.

**BE IT RESOLVED** by the Tribal Council of the White Mountain Apache Tribe that it hereby authorizes the Tribal Roads Committee to prioritize this as a needed bridge project to be placed high on current WMAT road priority listing. **This is an urgent safety issue.**

**BE IT FURTHER RESOLVED** by the Tribal Council of the White Mountain Apache Tribe that it directs the Bureau of Indian Affairs, Western Regional Office to begin the initial studies that are required to bring about the necessary plans and specifications to construct this bridge in the near future.

The foregoing resolution was on February 21, 2001 duly adopted by a vote of SIX for and ZERO against by the Tribal Council of the White Mountain Apache Tribe, pursuant to authority vested in it by Article IV, Section 1 (a), (h), (s), (t), and (u) of the Constitution of the Tribe, ratified by the Tribe September 30, 1993, and approved by the Secretary of the Interior on November 12, 1993, pursuant to Section 16 of the Act of June 18, 1934 (48 Stat. 984).



  
Chairman of the Tribal Council

  
Secretary of the Tribal Council