

**RESOLUTION OF THE
WHITE MOUNTAIN APACHE TRIBE OF THE
FORT APACHE INDIAN RESERVATION**

WHEREAS, the Fort Apache Agency is required by Federal Fire Policy (US-1996, Modified in 2001) to have an approved Wildland Fire Management Plan to manage White Mountain Apache Tribal lands by fire use for a ten year period, 2004-2014; and

WHEREAS, the Fort Apache Agency, Branch of Forestry has contracted with the White Mountain Apache Tribal Forestry Department to develop the Environmental Assessment for the Wildland Fire Management Plan; and

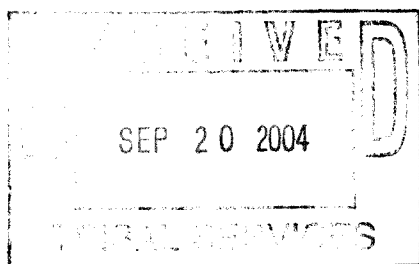
WHEREAS, the Tribal Plan and Project Review committee has reviewed the Wildland Fire Management Plan and has forwarded the approval of this document to the White Mountain Apache Tribal Council; and

WHEREAS, the Wildland Fire Management Plan meets with the desires of the White Mountain Apache Tribal Council.

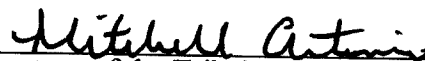
BE IT RESOLVED by the Tribal Council of the White Mountain Apache Tribe that it hereby approves the Wildland Fire Management Plan.

BE IT FURTHER RESOLVED by the Tribal Council of the White Mountain Apache Tribe that it directs the White Mountain Apache Tribal Forestry Department and Fort Apache Agency Branch of Forestry to provide no less than a yearly update on the success and failures of the Wildland Fire Management Plan to take place in close proximity to September of each year, at which time the Council can amend the plan as desired.

The foregoing resolution was on SEPTEMBER 8, 2004 duly adopted by a vote of FIVE for, TWO against, and TWO abstentions by the Tribal Council of the White Mountain Apache Tribe, pursuant to authority vested in it by Article IV, Section 1 (a), (b), (f), (h), (i), (t), and (u) of the Constitution of the Tribe, ratified by the Tribe September 30, 1993, and approved by the Secretary of the Interior on November 12, 1993, pursuant to Section 16 of the Act of June 18, 1934 (48 Stat. 984).




Chairman of the Tribal Council

ACTING 
Secretary of the Tribal Council

01-2004-215
P-2-S
S-2-2

Fire Management Plan Environmental Assessment

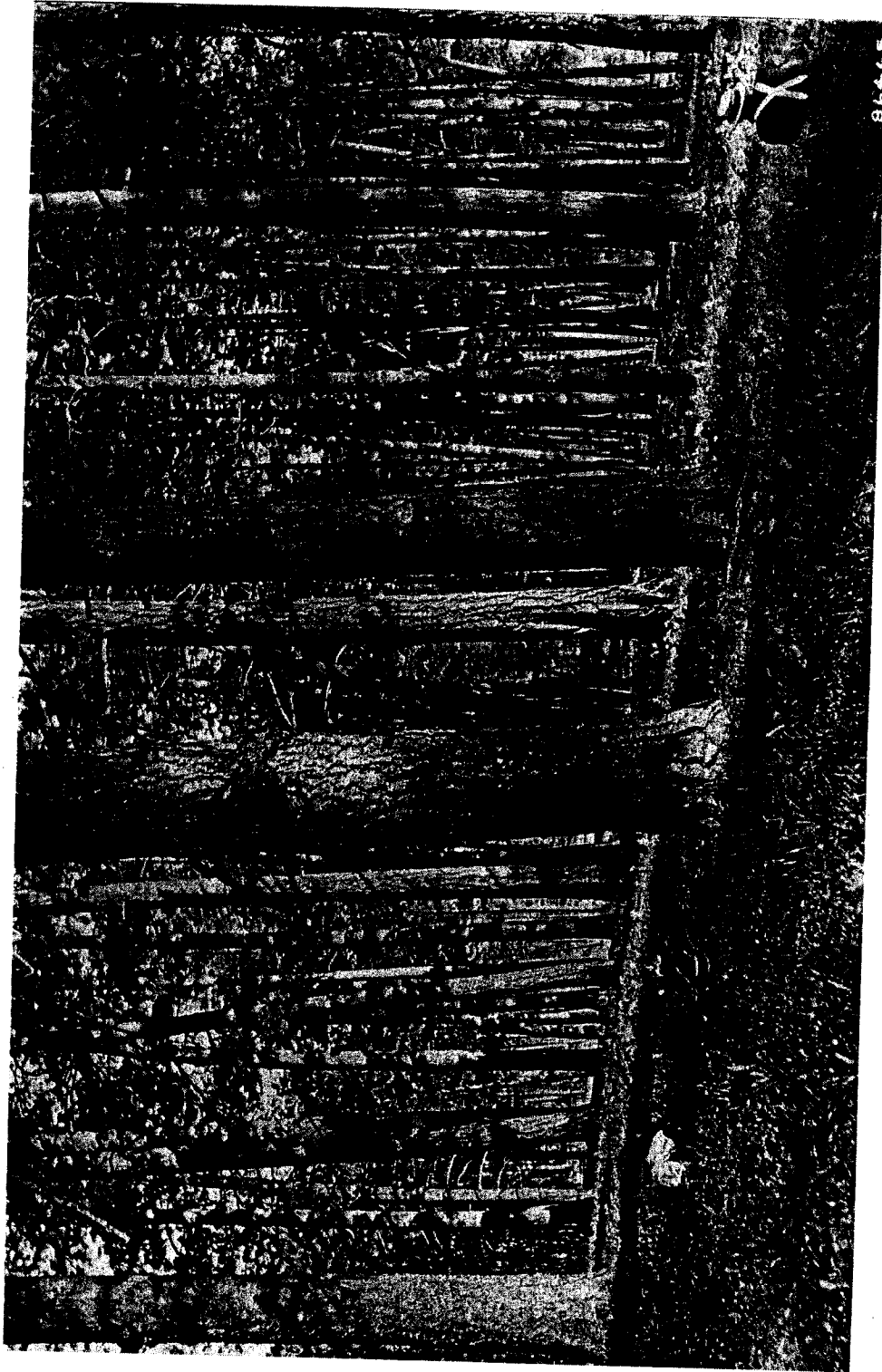
White Mountain Apache Tribe
April 2003

Fire Management Plan

- Pursuant to Federal Policy
 - Ensure fire fighter and public safety
 - Address role of wildland fire
 - Minimize damage from unwanted fire
 - Economically viable fire management
- Conform to Tribal Planning
 - Forest Management Plan
 - ESA, watershed, smoke, BMP's, heritage plans,

Purpose and Need

Historical Role of Fire



Results of Fire Suppression

- Buildup of Fuels
- Extreme Fire Behavior
- People at Risk
- Resources at Risk
- Decreased Health
- Decreased Forage
- Encroachment

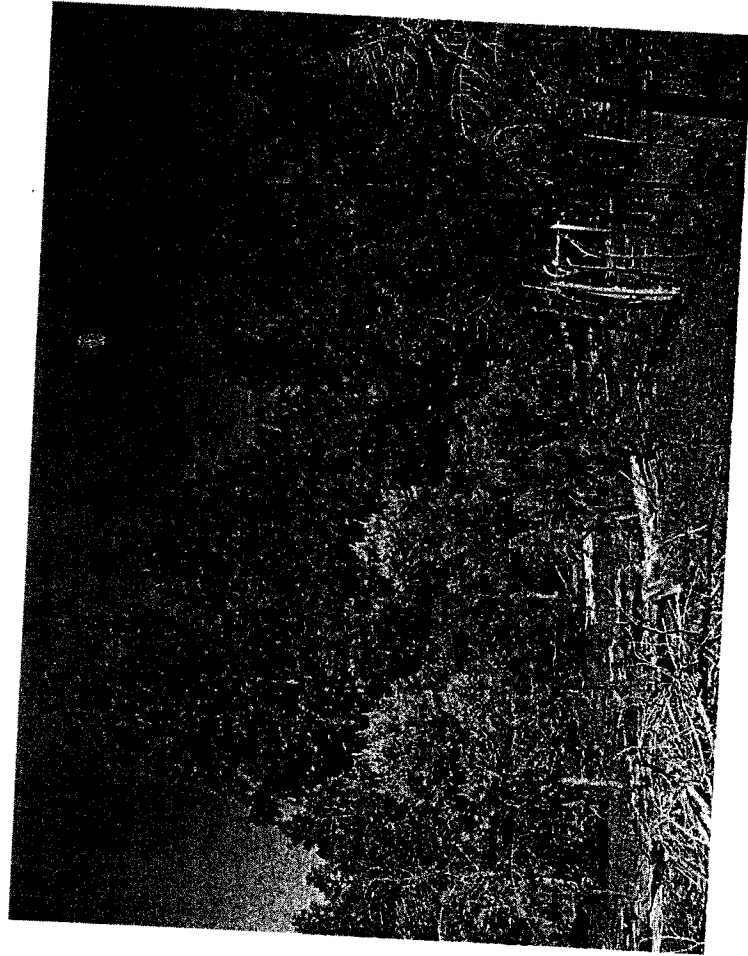


Table 3-8
Comparison of Forest Structure and Composition, 1968-1995

Parameter	DBH Class (inches)	1968	1995	Change
Trees Per Acre	Sapling (2-4)	-	421	-
	Poles (6-10)	74	102	28
	Small Sawlogs (12-20)	28	36	8
	Large Sawlogs (22+)	8	6	-2
	Total	110	144*	+34*
Basal Area (sq ft/acre)	Sapling (2-4)	-	8	-
	Poles (6-10)	21	32	11
	Small Sawlogs (12-20)	35	42	6
	Large Sawlogs (22+)	30	21	-9
	Total	87	95*	8

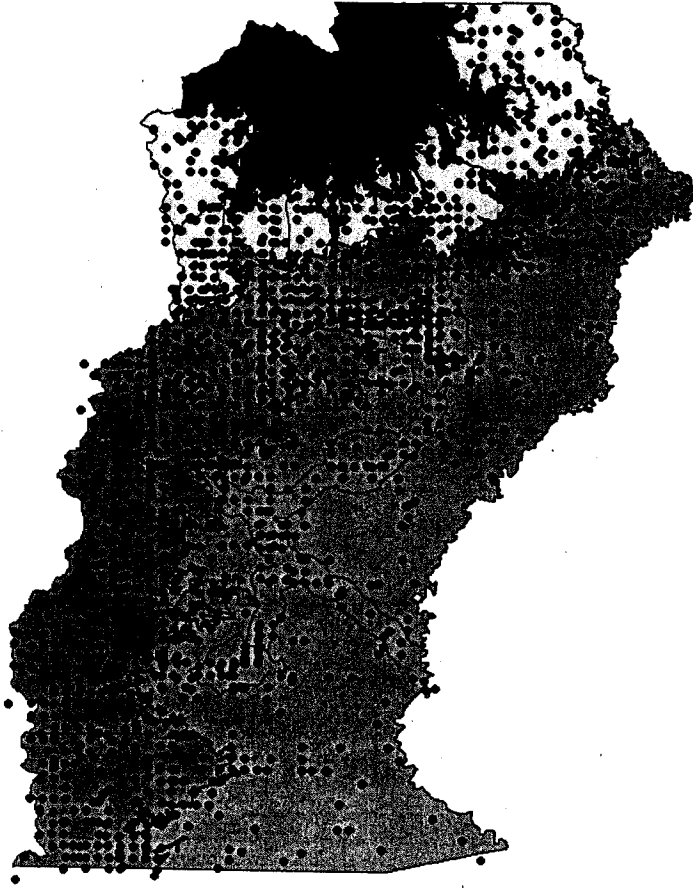
-Net increase in trees <20" DBH

-Net decrease in trees >20" DBH

-Information from the CFI data

High Ignition Frequencies

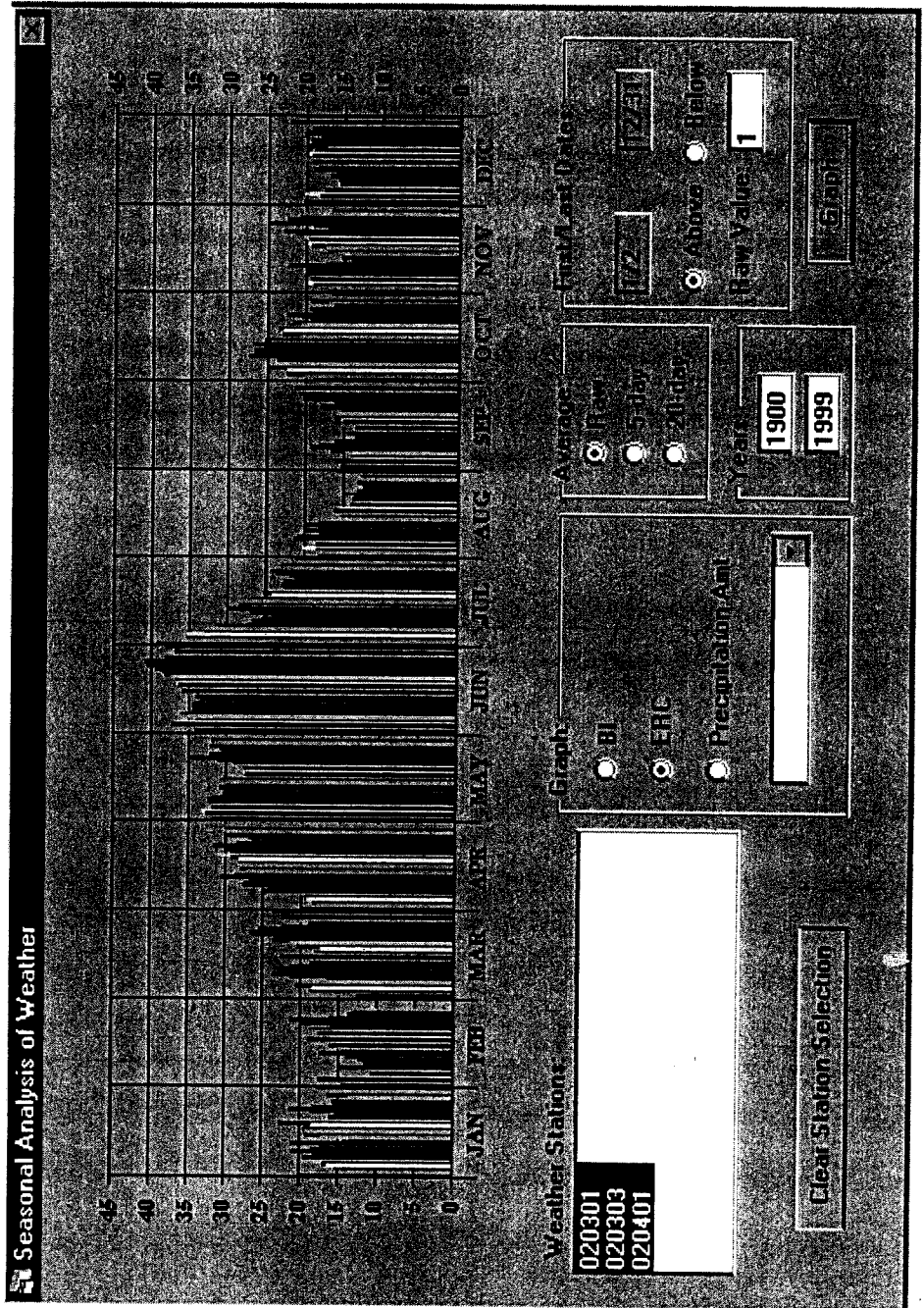
Ft. Apache FMPA - Fires By Statistical Cause
(Lightning vs. Human)



Brian B. Booher
Bighorn Information Systems
August 2000



Year-Round Fire Concern

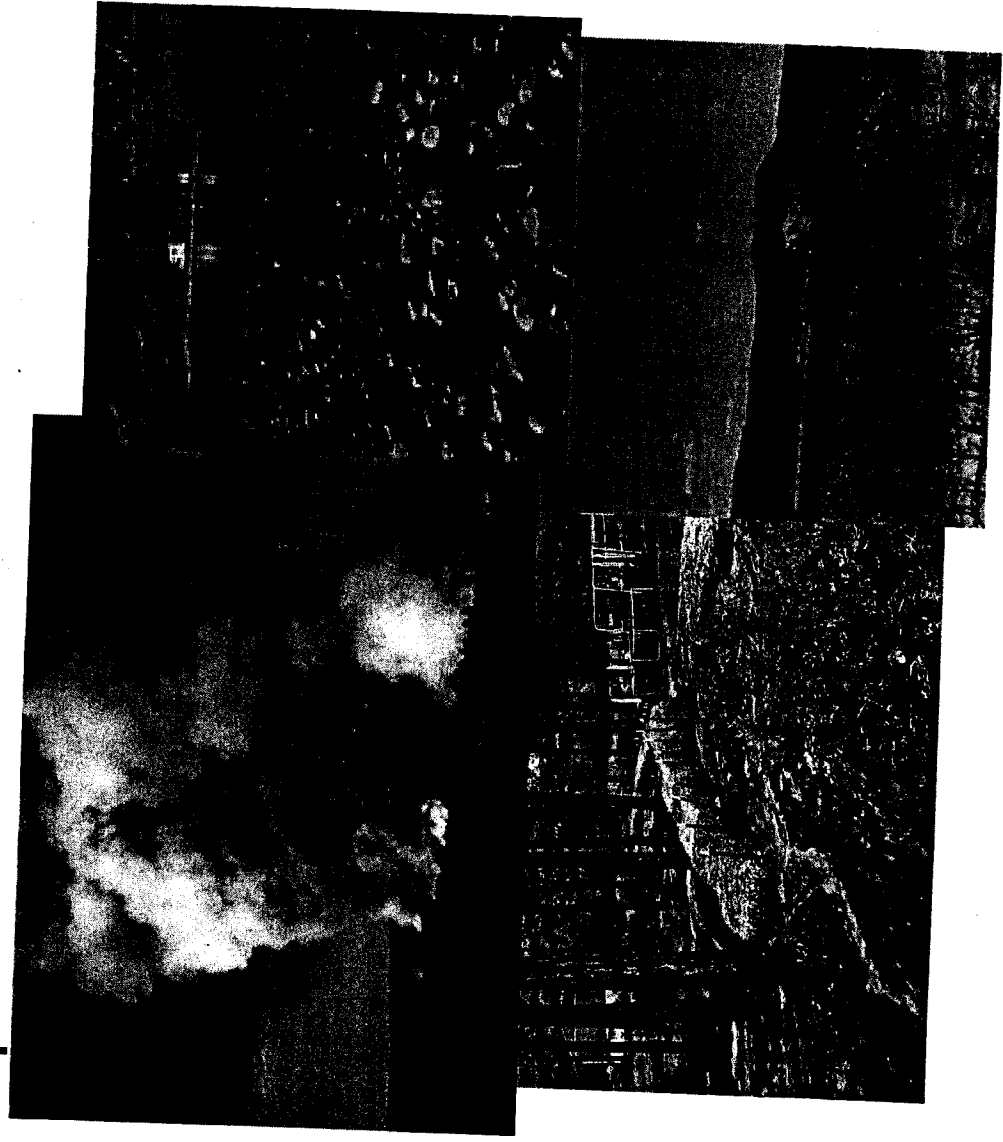


A Worst-Case Scenario



Consequences of No Action

- Vegetation Loss
- Soil Erosion
- Flooding
- Stream Impacts
- Impacts to Wildlife and Fisheries
- Impacts to Cultural Resources
- Impacts to Air Quality and Health
- Rehabilitation



Forestry Technician Scoping Meetings

- Qualified individuals must be used on prescribed fire projects.
- Burn Bosses / IC's need to brief crews
- Rx burns ignited under unsuitable conditions
- Herbicide use should not be allowed
- Silviculture prescriptions and burn plans are not coordinated
- Repeated Rx burns are needed every 3-5 years to thin seedlings and reduce fuels

Scoping Meetings with Staff

- Forest Management Plan Objectives
- WFU Management
- Fire Effects / Monitoring
- Fire History
- Fuels Inventory
- Adaptive Management
- Smoke Management
- Water Quality
- Fires in the Wilderness
- Fires and Apache Trout and other Sensitive Species
- Fires in the woodlands
- Fires on adjacent lands
- Endangered Species Act compliance and coordination with USF&W
- Project specific NEPA Compliance



Driving Issues

- **Wildland Fire Use Management**
- **Forest Structure and Composition**
- **Watershed Health and Quality**
- **Sensitive Species**
- **Smoke Management**
- **Protection of Heritage Resources**

Four Alternatives Developed

(1) No Action

- **Consistent with Current Management in the Forest Management Plan**
- **Suppression of Unwanted Fires**
- **About 7,000 ac of Fuel Break**
- **Current Levels of Prescribed Fire Use**
- **WUI Defensible Space**

(2) Improvement Alternative

- Consistent with Alternatives B and C in the Forest Management Plan, Except No Prescribed Natural Fire
 - Suppression of Unwanted Fires
 - About 7,000 ac of Fuel Break
 - Increased Levels of Prescribed Fire Use
 - WUI Defensible Space

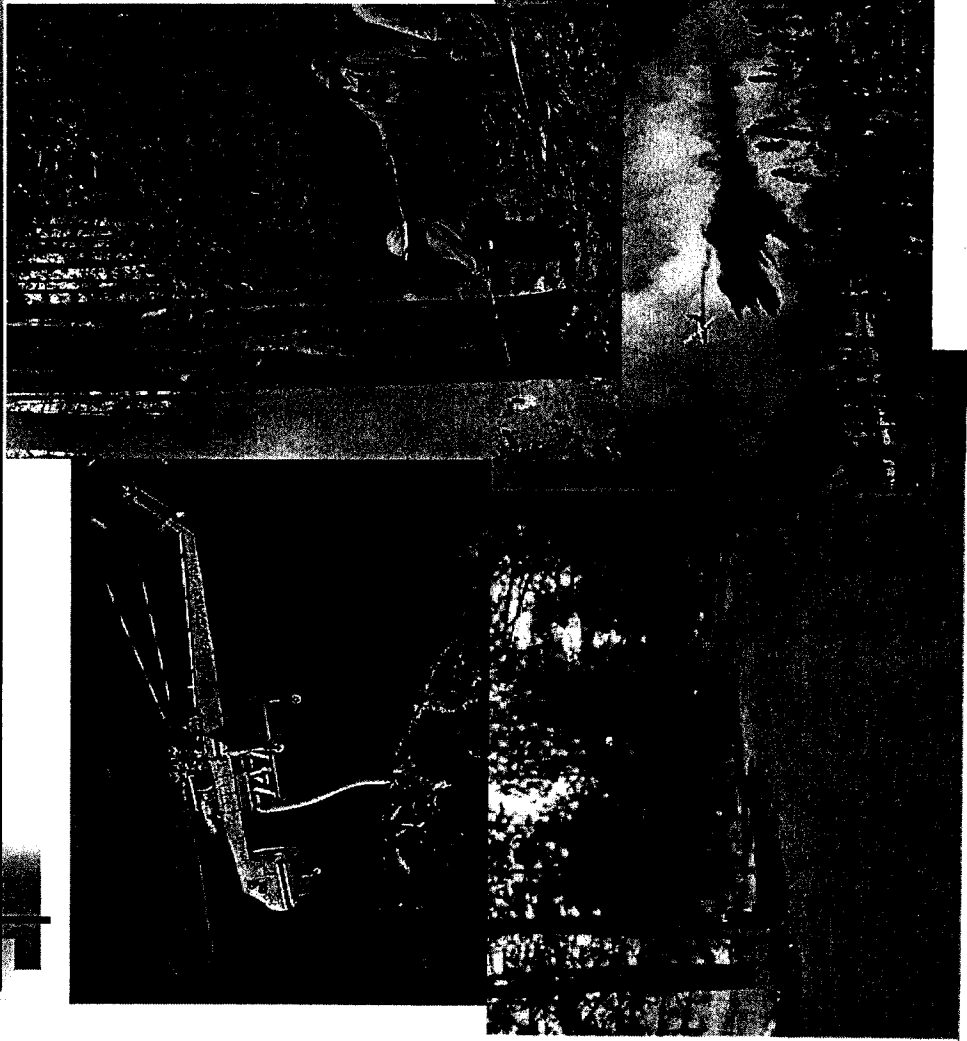
(3) Minimal Management

- Consistent with No Harvest Alternative in the Forest Management Plan
 - Suppression of Unwanted Fires ONLY
- Permits the Accumulation of Natural Fuels Dramatically Increasing Risks
- Eliminated from Further Analysis

(4) Proposed Action

Suppressing Unwanted Fire

- Fire Fighter and Public Safety are the Priority
- Minimize Potential Damages to Resources
- Tactics Used are Commensurate with Values at Risk
- Common to all alternatives
- Dispatch Procedures
- Preparedness Activities



<p align="center">TABLE 2-1 Summary of Fire Management Activity Levels for the Proposed Action and Alternatives (Suppression Objectives Remain the Same for all Alternatives)</p>			
FMZ/RL	No Action (A)	Improvement Alternative (B)	Proposed Action (C)
Suppression Objectives for Human Caused and Unwanted Natural Fires (AMR #1)			
FMZ I/RL 1	90% of fires < 2 ac	90% of fires < 2 ac	90% of fires < 2 ac
FMZ I/RL 2	90 % of fires < 10 ac	90 % of fires < 10 ac	90 % of fires < 10 ac
FMZ II/RL 1	90% of fires < 2 ac	90% of fires < 2 ac	90% of fires < 2 ac
FMZ II/RL 2-5	Low Intensity: 90% < 10 ac High Intensity: 90% < 5 ac	Low Intensity: 90% < 10 ac High Intensity: 90% < 5 ac	Low Intensity: 90% < 10 ac High Intensity: 90% < 5 ac
FMZ III/RL 1,2,7	90% of fires < 2 ac	90% of fires < 2 ac	90% of fires < 2 ac
FMZ III/RL 3-6	Low Intensity: 90% < 10 ac High Intensity: 90% < 5 ac	Low Intensity: 90% < 10 ac High Intensity: 90% < 5 ac	Low Intensity: 90% < 10 ac High Intensity: 90% < 5 ac
FMZ IV/RL 1-2	90% of fires < 2 ac	90% of fires < 2 ac	90% of fires < 2 ac
FMZ IV/RL 3	90 % of fires < 9 ac	90 % of fires < 9 ac	90 % of fires < 9 ac
FMZ IV/RL 4-6	Low Intensity: 90% < 15 ac High Intensity: 90% < 10 ac	Low Intensity: 90% < 15 ac High Intensity: 90% < 10 ac	Low Intensity: 90% < 15 ac High Intensity: 90% < 10 ac
RodeoChediski	90% of fires < 1000 ac	90% of fires < 1000 ac	90% of fires < 1000 ac

Fuel Break Construction

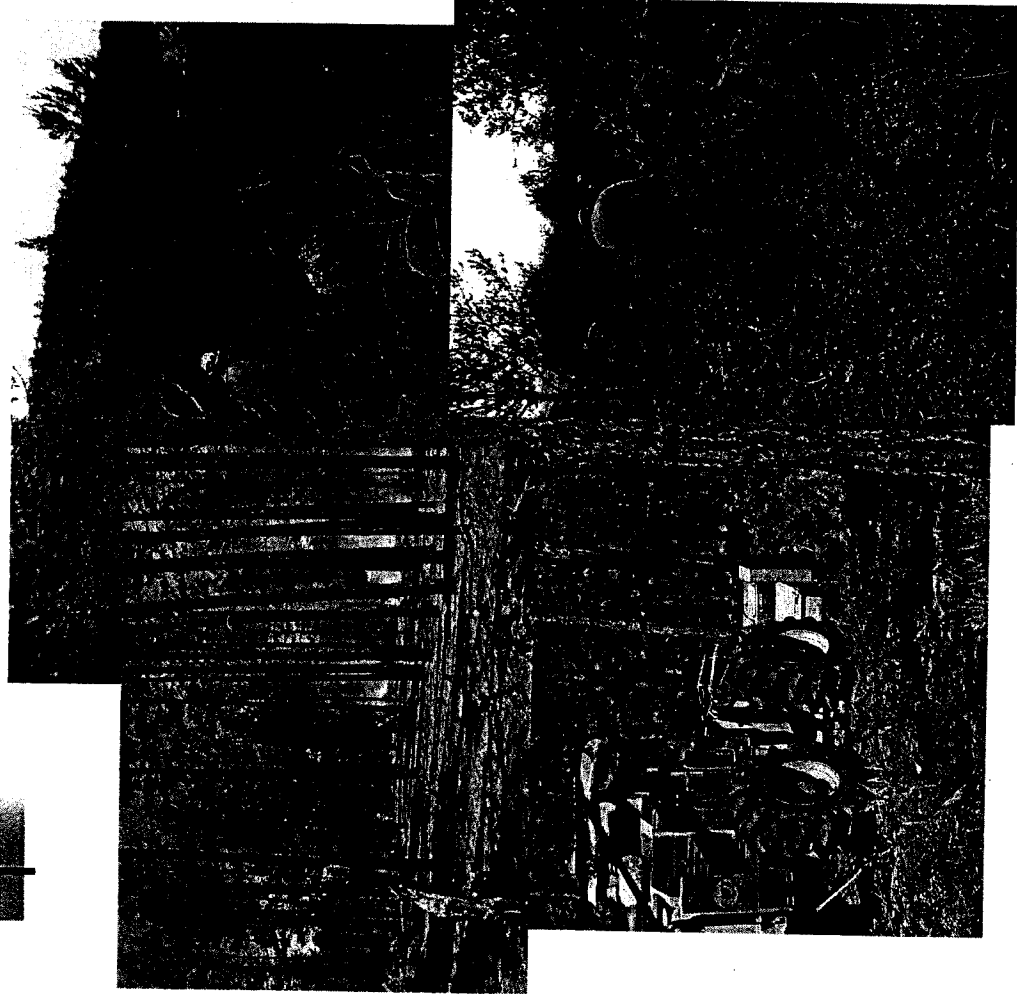
- Used in Suppressing Advancing Wildfire
- Along Ridgetops, Roads, Topo Breaks
- Near Values at Risk
- Mechanical Removal of Vegetation
- Prescribed Fire
- Maintained 5-10 yrs



Fuel Break near Hon-Dah

Hazard Fuels Reduction

- Reduce Activity Fuel
- Reduce Natural Fuel
- Achieve Resource Objectives with Fire
- Re-introduce Fire
- Mechanical Treatment
- Prescribed Fire
- Restoration



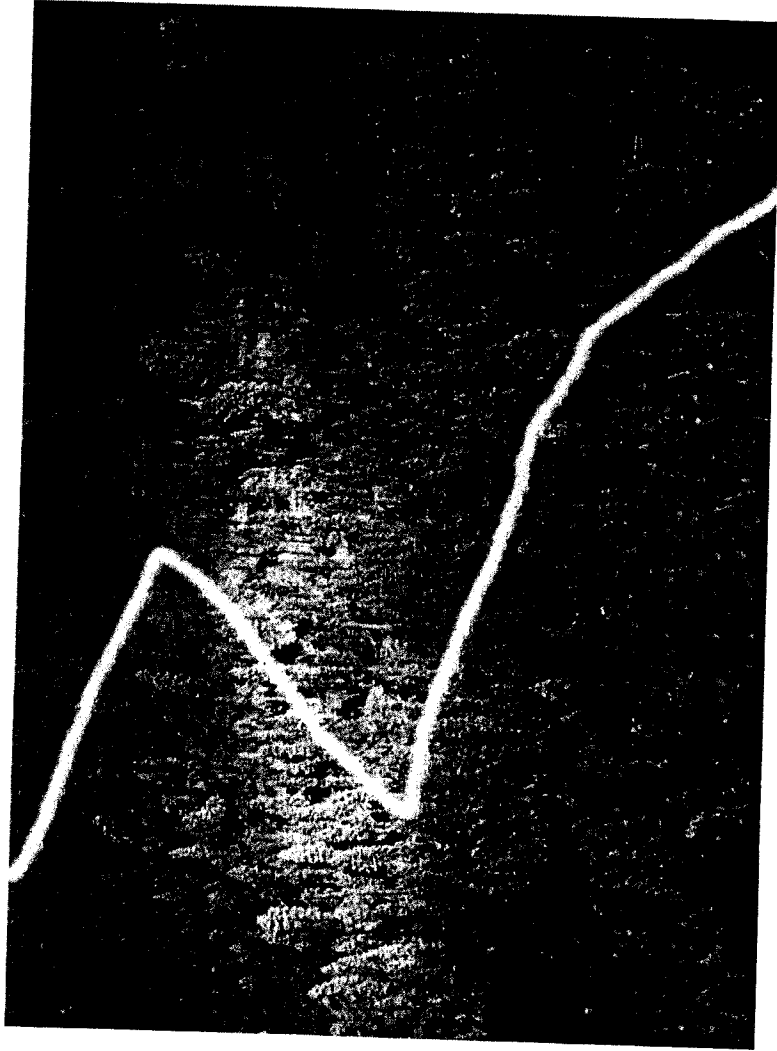
Creating Defensible Space

- Conditions that Permit Safe Fire Suppression Around Developed Areas
- Thinning, Pruning, and Removal of Ground Fuel
- 100 ft+ Zone



Wildland Fire Use (WFU)

- Fire Fighter and Public Safety are the Priority
- Use Natural Fires to Achieve Resource Objectives
- Managed within Prescription Limits
- Suppression Occurs if Limits Exceeded



Comparison of a Wildfire and a WFU on the Ochoco National Forest (OR)

WFOU ID	WFOU Name	WFOU - 1 - General		WFOU - 2 - Specific		WFOU - 3 - Detailed		WFOU - 4 - Summary		Comments
		Year	Month	Year	Month	Year	Month	Year	Month	
1	WFOU 1	2010	1	2010	1	2010	1	2010	1	...
2	WFOU 2	2010	2	2010	2	2010	2	2010	2	...
3	WFOU 3	2010	3	2010	3	2010	3	2010	3	...
4	WFOU 4	2010	4	2010	4	2010	4	2010	4	...
5	WFOU 5	2010	5	2010	5	2010	5	2010	5	...
6	WFOU 6	2010	6	2010	6	2010	6	2010	6	...
7	WFOU 7	2010	7	2010	7	2010	7	2010	7	...
8	WFOU 8	2010	8	2010	8	2010	8	2010	8	...
9	WFOU 9	2010	9	2010	9	2010	9	2010	9	...
10	WFOU 10	2010	10	2010	10	2010	10	2010	10	...
11	WFOU 11	2010	11	2010	11	2010	11	2010	11	...
12	WFOU 12	2010	12	2010	12	2010	12	2010	12	...
13	WFOU 13	2010	1	2010	1	2010	1	2010	1	...
14	WFOU 14	2010	2	2010	2	2010	2	2010	2	...
15	WFOU 15	2010	3	2010	3	2010	3	2010	3	...
16	WFOU 16	2010	4	2010	4	2010	4	2010	4	...
17	WFOU 17	2010	5	2010	5	2010	5	2010	5	...
18	WFOU 18	2010	6	2010	6	2010	6	2010	6	...
19	WFOU 19	2010	7	2010	7	2010	7	2010	7	...
20	WFOU 20	2010	8	2010	8	2010	8	2010	8	...
21	WFOU 21	2010	9	2010	9	2010	9	2010	9	...
22	WFOU 22	2010	10	2010	10	2010	10	2010	10	...
23	WFOU 23	2010	11	2010	11	2010	11	2010	11	...
24	WFOU 24	2010	12	2010	12	2010	12	2010	12	...
25	WFOU 25	2010	1	2010	1	2010	1	2010	1	...
26	WFOU 26	2010	2	2010	2	2010	2	2010	2	...
27	WFOU 27	2010	3	2010	3	2010	3	2010	3	...
28	WFOU 28	2010	4	2010	4	2010	4	2010	4	...
29	WFOU 29	2010	5	2010	5	2010	5	2010	5	...
30	WFOU 30	2010	6	2010	6	2010	6	2010	6	...
31	WFOU 31	2010	7	2010	7	2010	7	2010	7	...
32	WFOU 32	2010	8	2010	8	2010	8	2010	8	...
33	WFOU 33	2010	9	2010	9	2010	9	2010	9	...
34	WFOU 34	2010	10	2010	10	2010	10	2010	10	...
35	WFOU 35	2010	11	2010	11	2010	11	2010	11	...
36	WFOU 36	2010	12	2010	12	2010	12	2010	12	...
37	WFOU 37	2010	1	2010	1	2010	1	2010	1	...
38	WFOU 38	2010	2	2010	2	2010	2	2010	2	...
39	WFOU 39	2010	3	2010	3	2010	3	2010	3	...
40	WFOU 40	2010	4	2010	4	2010	4	2010	4	...
41	WFOU 41	2010	5	2010	5	2010	5	2010	5	...
42	WFOU 42	2010	6	2010	6	2010	6	2010	6	...
43	WFOU 43	2010	7	2010	7	2010	7	2010	7	...
44	WFOU 44	2010	8	2010	8	2010	8	2010	8	...
45	WFOU 45	2010	9	2010	9	2010	9	2010	9	...
46	WFOU 46	2010	10	2010	10	2010	10	2010	10	...
47	WFOU 47	2010	11	2010	11	2010	11	2010	11	...
48	WFOU 48	2010	12	2010	12	2010	12	2010	12	...
49	WFOU 49	2010	1	2010	1	2010	1	2010	1	...
50	WFOU 50	2010	2	2010	2	2010	2	2010	2	...
51	WFOU 51	2010	3	2010	3	2010	3	2010	3	...
52	WFOU 52	2010	4	2010	4	2010	4	2010	4	...
53	WFOU 53	2010	5	2010	5	2010	5	2010	5	...
54	WFOU 54	2010	6	2010	6	2010	6	2010	6	...
55	WFOU 55	2010	7	2010	7	2010	7	2010	7	...
56	WFOU 56	2010	8	2010	8	2010	8	2010	8	...
57	WFOU 57	2010	9	2010	9	2010	9	2010	9	...
58	WFOU 58	2010	10	2010	10	2010	10	2010	10	...
59	WFOU 59	2010	11	2010	11	2010	11	2010	11	...
60	WFOU 60	2010	12	2010	12	2010	12	2010	12	...

Large WFOU - 1 - General - 11/23/10

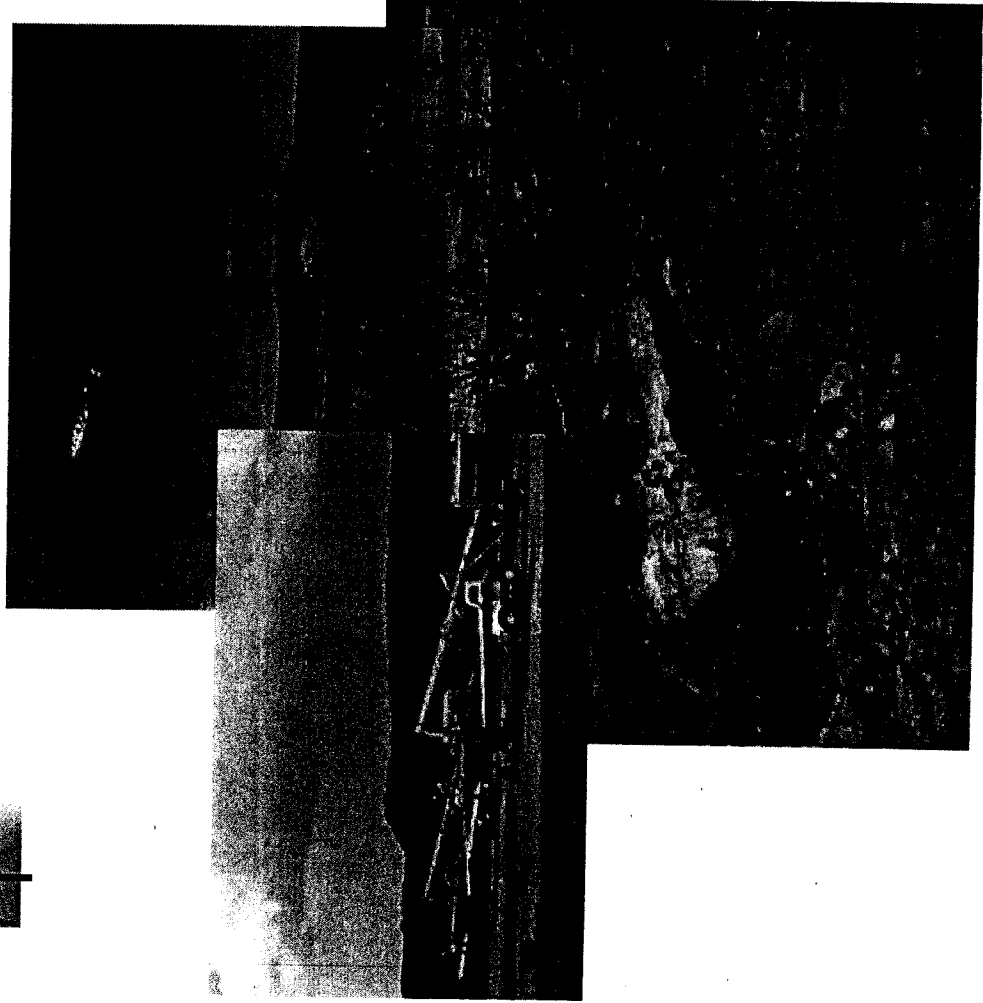
Large WFOU - 2 - Specific - 11/23/10

Large WFOU - 3 - Detailed - 11/23/10

Large WFOU - 4 - Summary - 11/23/10

Comments: ...

Burned Area Emergency Response (BAER)



- Mitigation of
Suppression Effects,
Fire Effects, and
Ecological Damage
- ASAP After a Fire
- BIA Emergency
Funding