



WHITE MOUNTAIN APACHE TRIBE

A Sovereign Tribal Nation

(Approval of Three Location Sites for Cibecue Health Care Center)

WHEREAS, the Tribal Council of the White Mountain Apache Tribe takes medical and health services on the Fort Apache Indian Reservation seriously and regularly supports Tribal initiatives aimed at improving service offerings to the Tribal members on the reservation; and

WHEREAS, the Tribal Council supports the Indian Health Service ("IHS") in their development of a plan for the replacement of the existing IHS Cibecue Health Center; and

WHEREAS, the Tribal Council recognizes the need for a new Cibecue Health Care Center and the importance of providing a site for the proposed Health Care Compound; and

WHEREAS, the Tribal Council is asked to consider endorsement of three potentially viable parcels, of which one will be selected for the replacement center, helipad, parking and service roads; and

WHEREAS, the Tribal Council is asked to grant IHS and contractors with access to said parcels for the purpose of assessment and evaluation in accordance with the IHS Technical Handbook for Environmental Health and Engineering Volume II Health Care Facilities Planning, Phase I and Phase II site selection and Evaluation Reports; and

WHEREAS, the Tribal Council find it in the best interest of the Tribe to support IHS in the replacement of its current Cibecue Health Care Center and associated amenities by designating three potentially viable parcels for the Replacement Center and authorizing IHS and contractors access to each parcel to perform sufficient assessment and evaluation or site selection.

BE IT RESOLVED by the Tribal Council of the White Mountain Apache Tribe that it hereby supports the submission of the following parcels as potential sites for the replacement of the existing IHS Cibecue Health Care Compound:

1. Approximately 4.85 acres Rodeo Ground Area.
2. Approximately 2.18 acres across from Rodeo Ground Area.
3. Approximately 5.00 acres in the Bull Pasture Flat Area.

BE IT FURTHER RESOLVED by the Tribal Council of the White Mountain Apache Tribe that it hereby directs that this project shall be subject to review by Realty, Land Board, and the Office of the Attorney General and any additional necessary review, prior to Tribal Council approval.

BE IT FURTHER RESOLVED by the Tribal Council of the White Mountain Apache Tribe that it hereby directs that in the event this Resolution directly conflicts with the Tribal Constitution, Tribal


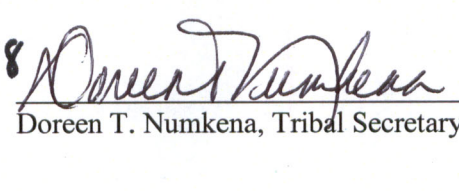
Resolution No. 06-2018-129

Ordinances, or any material facts concerning the issues presented are later found to be false, this Resolution shall be deemed null and void and have no legal effect.

BE IT FURTHER RESOLVED by the Tribal Council of the White Mountain Apache Tribe that it hereby directs that in the event that this Resolution conflicts with a prior Resolution or Policy, this Resolution shall supersede and govern over the conflicting subject matter.

BE IT FURTHER RESOLVED by the Tribal Council of the White Mountain Apache Tribe that the Chairwoman, or in her absence, the Vice-Chairman, is hereby authorized to execute any and all documents necessary to effectuate the intent of this Resolution.

The foregoing resolution was on **JUNE 13, 2018** duly adopted by a vote of **TEN** for, **ZERO** against, and **ZERO** abstentions by the Tribal Council of the White Mountain Apache Tribe, pursuant to authority vested in it under the enumerated powers listed in Article IV, Section 1 of the WMAT Constitution, so ratified on September 30, 1993, and federally recognized pursuant to Section 16 of the Indian Reorganization Act of June 18, 1934 (48 Stat. 984).

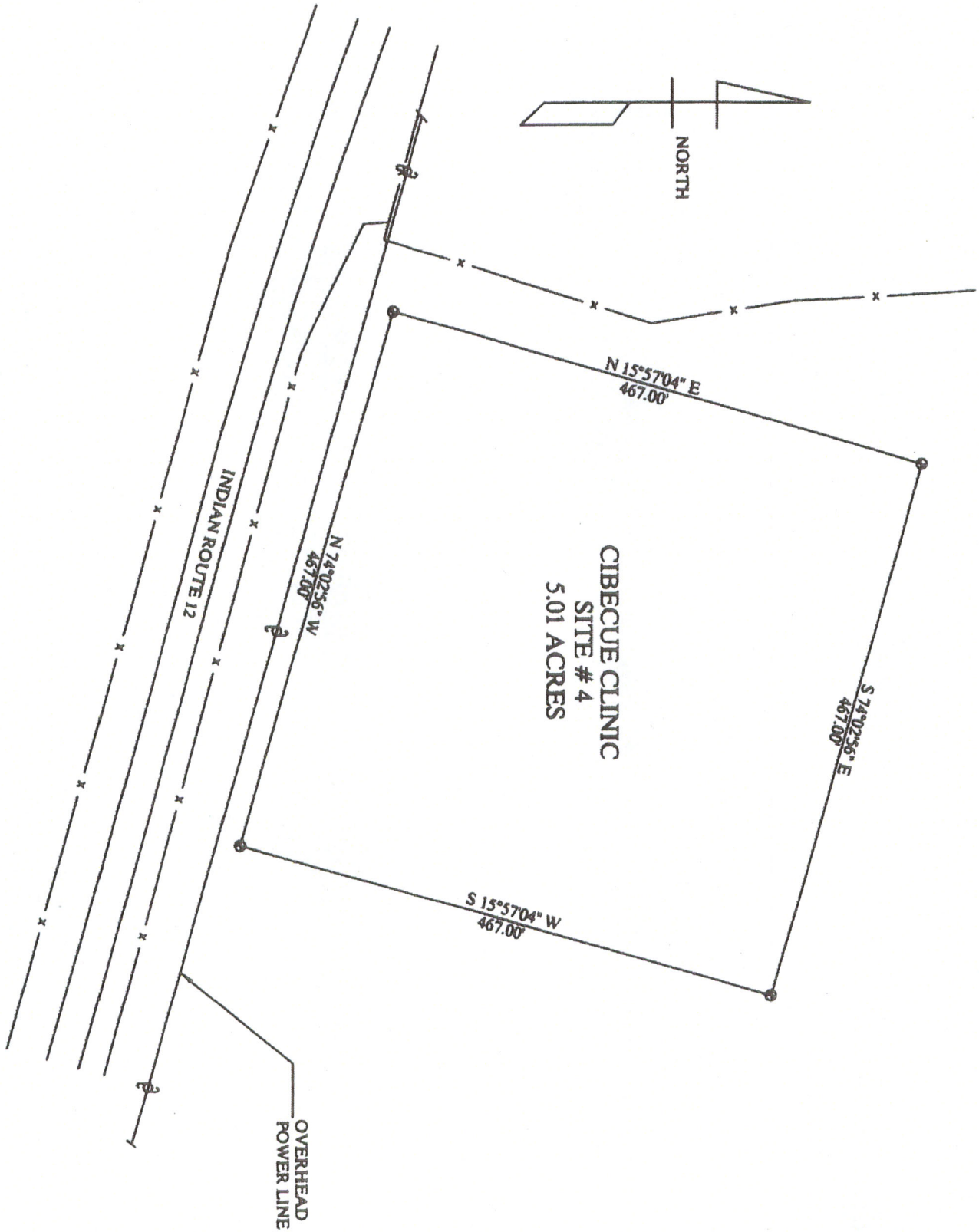
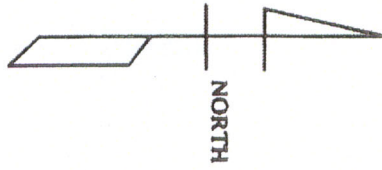
	12.27.18		12/27/2018
Gwendolyn Lee-Gatewood, Chairwoman	Date	Doreen T. Numkena, Tribal Secretary	Date

Indian Row 12

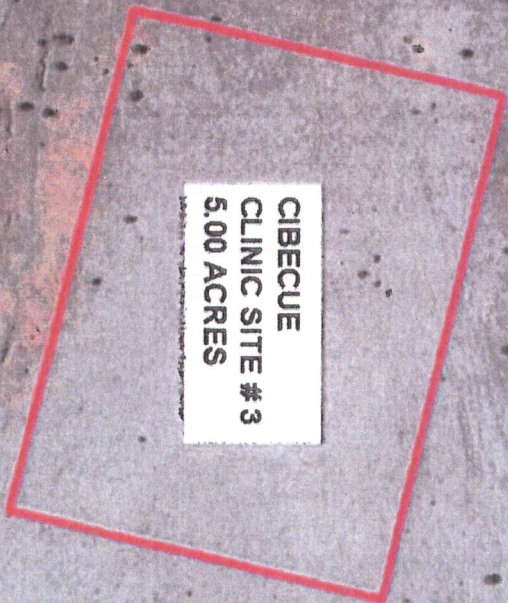


**CIBECUE
CLINIC SITE #4
5.00 ACRES**





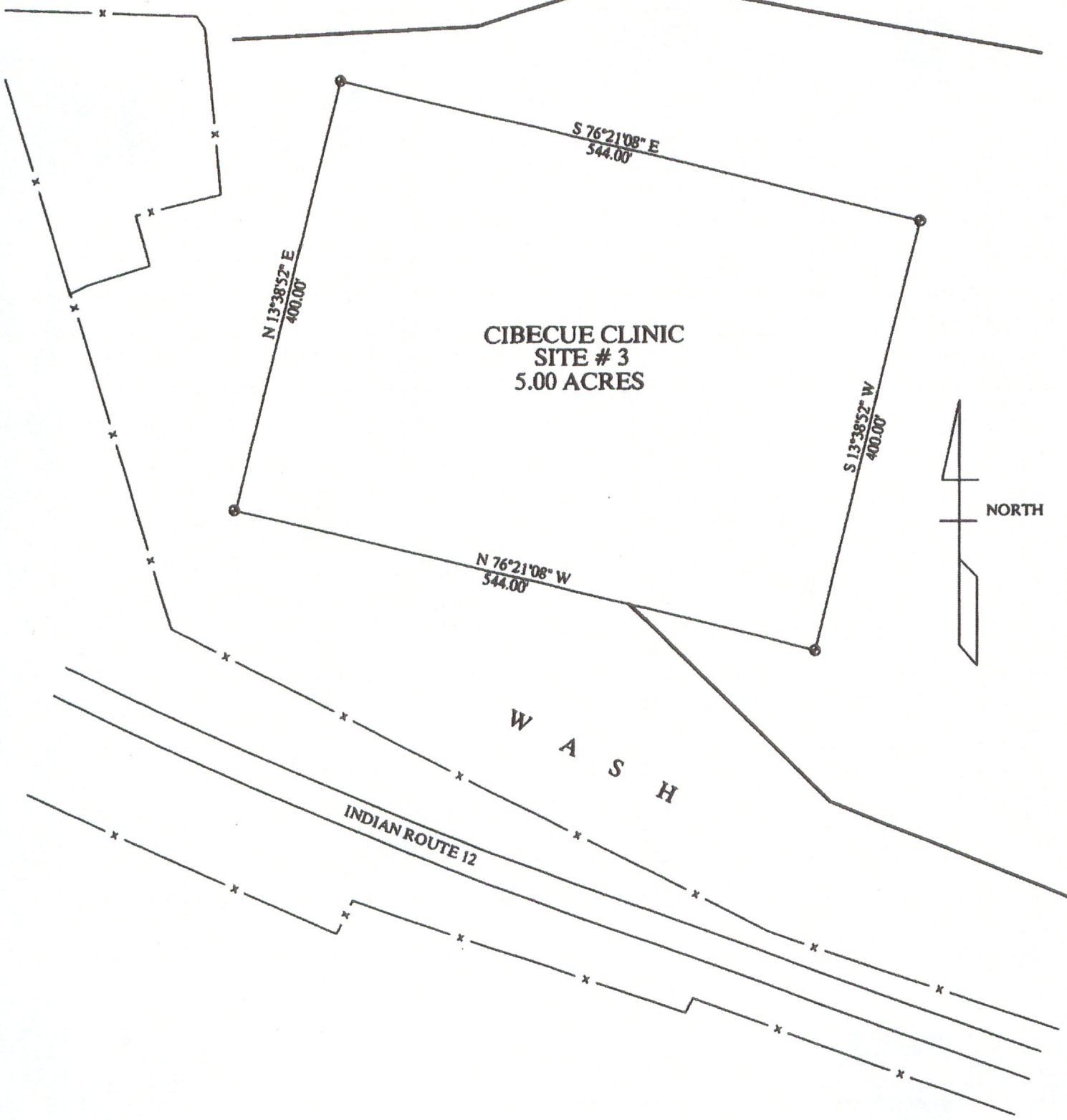
Inclun Road 12



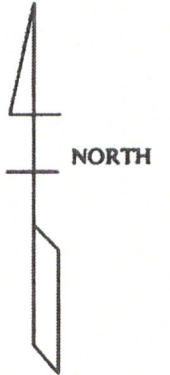
CIBECUE
CLINIC SITE # 3
5.00 ACRES

W A S H

W A S H



CIBECUE CLINIC
SITE # 3
5.00 ACRES



W A S H

INDIAN ROUTE 12



**CIBECUE
CLINIC SITE # 2
2.18 ACRES**

Google earth

2.18 acres

100 FT



NORTH

FARM LAND

CIBECUE CLINIC
SITE # 2
2.18 ACRES

N 40°01'09"
54.40'

MH

N 81°54'37" E
24.11'

N 8°46'21" W
473.50'

N 63°11'56" E
419.08'

FH & WV

N. CLIFFVIEW DR.

OVERHEAD
POWER
LINE

S 8°05'23" E
264.19'

PVC • MH • PVC

N 8°06'51" W
155.22'

• PVC

• W
• MH

S 81°52'59" W
390.85'

• PVC

PH
PED

E. RODEO

• PVC

S 41°54'
39.33'

24"
CULVERT

• MH

24"
CULVERT



CIBECUE
CLINIC SITE # 1
4.85 ACRES

